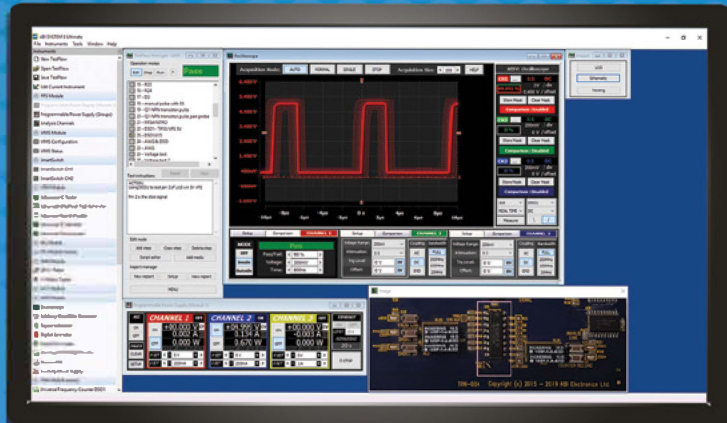


# Technical Datasheet

## SYSTEM 8 PPS



**abi**  
✓ Saves you time!

## GENERAL SPECIFICATIONS (per module)

### Input requirements

+5V VDC	<800mA
90 to 264VAC 50/60Hz	2.4A@115VAC 1.2A@230VAC

### Physical characteristics

Dimensions	205.8mm X 148mm X 42.3mm
Connectivity	USB
Channels	3

### Operation

All channels are isolated and have equal capabilities. In normal operation each channel is fully independent and isolated. This is equivalent to having separate single output power supplies. In group operation channels can be placed into arbitrary groups for easy multichannel control. Any number of channels can be added to a group, and up to 3 independent groups can be created. Grouped channels remain isolated but work to achieve a common goal, these include:

- Isolated Voltage Tracking – Channels are set equal to the group's voltage limit but have independent current control. This can be used to generate tracking bipolar voltages or tracking unipolar voltages relative to different grounds.
- Power Sequencing – Channels respond to a group On/Off control.
- Voltage Stacking – When voltages above 40V are required, or higher currents (8A MAX) channels can be externally wired in series. The group's set voltage will be divided equally between all members of the group to make efficient use of each channels power envelope and the group's current limit will be applied to all members equally.
- Parallel – When currents above 8A are required channels can be externally wired in parallel. The group's set current limit will be divided equally between all members of the group to make efficient use of each channels power envelope and the group's voltage limit will be applied to all members equally.

## OUTPUT SPECIFICATIONS (per channel)

### Voltage / Current / Power Levels

Output Voltage Range	0V – 40V
Output Current Range	0A – 8A
Output Power Limit	40W

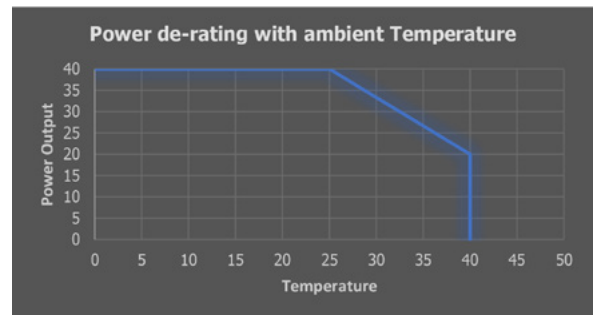
### Performance

Ripple & Noise	< 150mV pk-pk 2
Load Regulation	< 0.15% using remote sense, 2% without 3
Line Regulation	< 0.2% 4
Transient Response	Approximately 50us for output to stabilise within 50mV 5

## Environmental

### Temperature Range

0 to 40°C  
This unit must be installed in a fan-cooled enclosure, providing airflow through the module. For ambient temperatures above 25°C, maximum continuous output power must be de-rated. See graph below:



### Measure specifications

	Resolution	Accuracy
Voltage	1mV	< 0.2% <sup>6</sup>
Current	1mA	< 0.5% <sup>7</sup>

### Protection

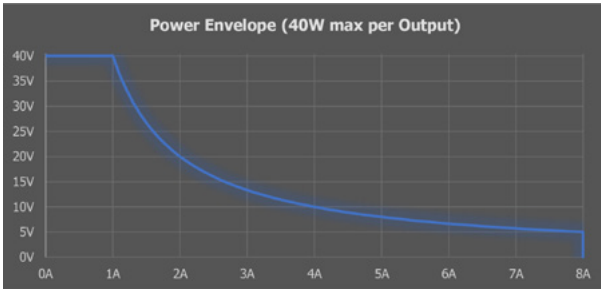
Isolation	300V peak to adjacent channel and earth.
Over Voltage (OVP)	User programmable trip 0V – 40.5V
Over Current (OCP)	User programmable trip 0A – 8.5A
Over Temperature (OTP)	Output trips off when over temperature. Not user programmable.

### Connections

Outputs	Insulated 4mm sockets compatible with shrouded plugs and leads. 19.05mm (0.75in) spacing for use with standard adapters and accessories.
Remote Sense	Insulated 2mm sockets compatible with shrouded plugs and leads.

### Additional info

Front panel RGB LED indication of output state including fault conditions and channel identification. The maximum current at a given voltage setting is limited by the power envelope (see graph below) which is set to give 1A @ 40V rising to 8A @ 5V under all AC supply conditions <sup>1</sup>.



At lower output voltages the power is restricted by the maximum 8A hardware current limit.

The output architecture allows for channel polarity to be swapped internally to effectively provide negative voltages without changing any external wiring. This also provides backwards compatibility for cables created for the original VPS.

### NOTES

1. At line voltages between 90VAC - 110VAC, maximum continuous output power must be de-rated to 35W
2. Measured with HMO3002 oscilloscope (20MHz bandwidth limit, arithmetic average of 16). Max noise & ripple at 24V, 1.6A
3. Measured within output current range of 0A to 8A, at output voltages of 3.3V and 5V
4. Measured at 4V, 8A, at AC line voltages between 90 and 240VAC, 50Hz
5. Measured at 4V output, 200us load pulse from 4A to 8A. 500us to stabilise from 8A to 4A load change.
6. System8 reading compared with actual output reading, measured with a calibrated digital voltmeter, using Remote Sense connections. If no remote sense is used, accuracy is < 0.2% + (0.15% x load current)
7. Measured within an output current range of 0.5A to 8A



More from ABI...

## RevEng Schematic Learner



## BoardMaster Universal PCB tester



## JTAGMaster Boundary Scan Tester & Programmer



## SENTRY Counterfeit IC Detector



## The Compact Range Out-of-circuit IC Testers



You're in good company!

For over 30 years, ABI has been the supplier of choice for a wide range of industries. Ranging from military and aerospace to education, mass transport and maintenance, ABI's customers are supported through a network of distributors present in 60 countries.



**İLTEK TEKNOLOJİ LTD. ŞTİ.**  
İLTEK Anayurt Güvenlik Sistemleri Savunma Teknolojileri Bilişim  
ve Elektronik Ticaret Ltd.Şti.  
Tel: +90 312 440 42 85 Fax: +90 312 440 42 86  
info@iltekteknoloji.com.tr  
www.iltekteknoloji.com.tr  
Adres: Hilal Mah. 687 Sokak . Boyner Apt. No: 3/7 Çankaya /  
ANKARA / TURKEY

Your local ABI Distributor details

